



# Abbreviated substances classification

## What is the NATRUE classification of my substance?

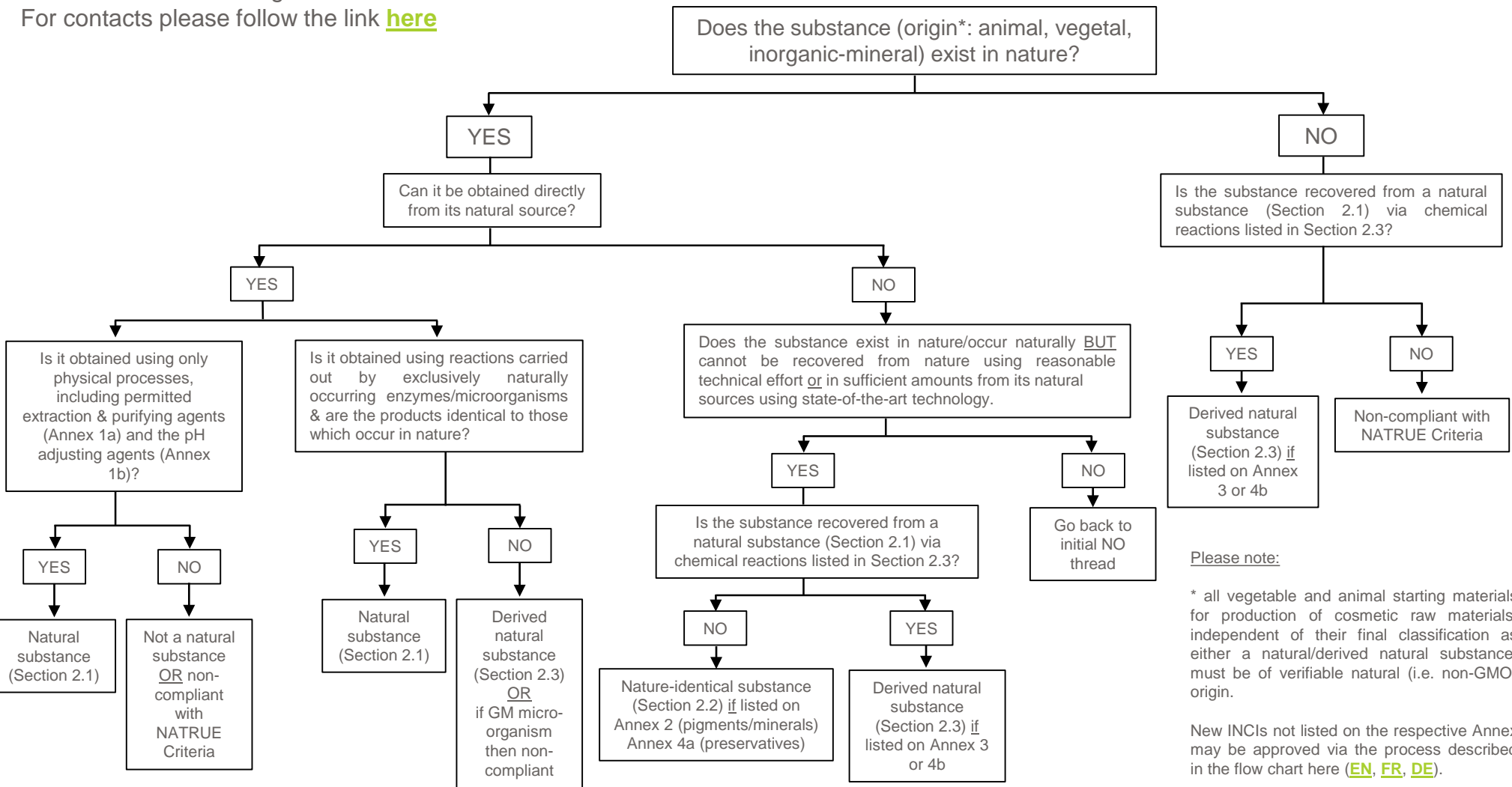
For information purposes only

Please refer to the original [NATRUE documents](#) (criteria etc.) for the latest details and binding information

For contacts please follow the link [here](#)

### INSTRUCTIONS:

1. Place the mouse on the answer and click once one the little hand (👉) has appeared to obtain more information.
2. Click again and the information will disappears.
3. If you click when the little hand is not visible, then the presentation will end (and you will need to start from the beginning).



Please note:

\* all vegetable and animal starting materials for production of cosmetic raw materials, independent of their final classification as either a natural/derived natural substance, must be of verifiable natural (i.e. non-GMO) origin.

New INCI's not listed on the respective Annex may be approved via the process described in the flow chart here ([EN](#), [FR](#), [DE](#)).